

Coated Fabric

MINGLE



MG-002
Straw



MG-003
Aloe



MG-047
Oyster



MG-027
Hemp



MG-009
Melon



MG-033
Algae



MG-037
Haze



MG-007
Linen



MG-026
Cloud



MG-019
Persimmon



MG-023
Turquoise



MG-020
Fog



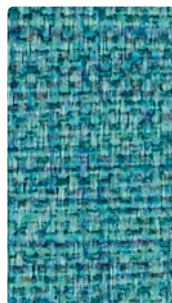
MG-017
Flax



MG-036
Rain



MG-001
Rouge



MG-013
Aqua



MG-030
Taupe



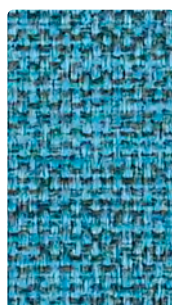
MG-010
Latte



MG-016
Sterling



MG-008
Magenta



MG-014
Sky



MG-004
Indigo



MG-000
Sable



MG-006
Charcoal

Upholstery

80% Vinyl - Phthalate Free face,
20% Polyester backing

54 inches / 137 cm

Exceeds 250,000 Double Rubs

Soil & Stain Resistant Top Coat with
Ink Resistant Technology

GREENGUARD Certified

MINGLE

TECHNICAL INFORMATION

Application: Upholstery

Content: 80% Vinyl - Phthalate Free face, 20% Polyester backing

Weight: 30 oz./linear yard / 930.10 g/lm

Width: 54 inches / 137 cm

Finish: Soil & Stain Resistant Top Coat with Ink Resistant Technology

Approx. Repeat: None

Directional: Yes

Shown Railroaded: No

PERFORMANCE

Abrasion: Exceeds 250,000 Double Rubs
(Wyzenbeek/Cotton Duck)

Abrasion test results exceeding ACT Performance Guidelines are not an indicator of product lifespan. Multiple factors affect durability and appearance retention.

Crocking: Dry: Grade 4 min / Wet: Grade 4 min

Colorfastness to Light: Grade 5 at 300 hours

FLAMMABILITY

California Technical Bulletin 117-2013
NFPA 260/UFAC Class 1
FMVSS 302

REDUCED ENVIRONMENTAL IMPACT

This product is GREENGUARD Certified for low chemical and particle emissions to UL standard UL 2818 and may contribute to LEED certification. For complete information visit mayerfabrics.com.

No FR Additives No Antimicrobial/Antibacterial Additives

CLEANING INFORMATION

WS: Water/Solvent Cleaner

BC: Bleach Cleanable –

1 part bleach, 9 parts water = 10% bleach, 90% water solution.

CFC: Coated Fabrics Cleaning – Refer to Mayer website for complete cleaning info.

DYE TRANSFER DISCLAIMER

Certain clothing and accessory dyes (such as those used on denim jeans) may migrate to lighter colors. This phenomenon is increased by humidity and temperature and is irreversible. Mayer Fabrics will not assume responsibility for dye transfer caused by external contaminants. Please check compatibility when using this product in combination with painted or varnished surfaces.

ADDITIONAL INFORMATION

Custom Colors: All patterns can be custom colored. Minimum yardage applies.

Warranty: Please refer to the Mayer website for warranty information by pattern.

Digital Swatch Card Color Matching: Due to color variations on different monitors and color printers, actual swatch colors may vary slightly. Please request a memo sample from Mayer Fabrics to ensure proper color representation.

Complete and current product information available at mayerfabrics.com.



 **MAYERFABRICS**



MGCD ©2017 MF1021

T 800.428.4415 mayerfabrics.com
500 S. Kitley Ave. Indianapolis, IN 46219